

中華民國94年

癌症登記報告

CANCER REGISTRY ANNUAL REPORT, 2005

TAIWAN



96 12

BUREAU OF HEALTH PROMOTION

DEPARTMENT OF HEALTH

THE EXECUTIVE YUAN

TAIWAN

DECEMBER 2007

中華民國 94 年

癌症登記報告

CANCER REGISTRY ANNUAL REPORT, 2005

TAIWAN

96 12

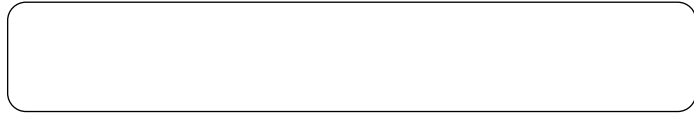
**BUREAU OF HEALTH PROMOTION
DEPARTMENT OF HEALTH
THE EXECUTIVE YUAN
TAIWAN
DECEMBER 2007**

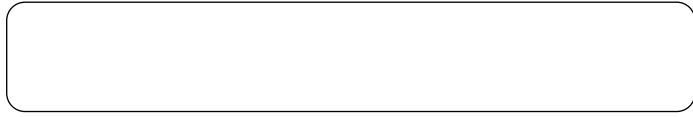
	viii
.....	x
	xii
	xiii
	xvii
94	1
	2
10	3
	(ICD-O-3 C00 - C14 C07 - C08 C11)	6
	(ICD-O-3 C00 - C06)	8
	(ICD-O-3 C00 C44.0)	10
	(ICD-O-3 C01 - C02)	11
	(ICD-O-3 C03)	12
	(ICD-O-3 C04)	13
	(ICD-O-3 C05 - C06)	14
	(ICD-O-3 C06.0)	15
	(ICD-O-3 C05 C05.2)	16
	(ICD-O-3 C06.2)	17
	(ICD-O-3 C06.1 C05.2 C06.8 C06.9)	18
	(ICD-O-3 C09 - C10)	19
	(ICD-O-3 C12 - C13)	20
	(ICD-O-3 C14)	21
	(ICD-O-3 C07 - C08)	22
	(ICD-O-3 C11)	24
	(ICD-O-3 C15 - C26 C48)	
	(ICD-O-3 C15)	26

(ICD-O-3 C16).....	28
(ICD-O-3 C17)	30
(ICD-O-3 C18 - C21).....	32
(ICD-O-3 C18).....	34
(ICD-O-3 C19 - C21).....	36
(ICD-O-3 C22).....	38
(ICD-O-3 C23 - C24)	40
(ICD-O-3 C25).....	42
(ICD-O-3 C48)	44
(ICD-O-3 C26).....	46
(ICD-O-3 C30 - C39)	
(ICD-O-3 C30 - C31).....	48
(ICD-O-3 C32).....	50
(ICD-O-3 C33 - C34).....	52
(ICD-O-3 C38.4).....	54
(ICD-O-3 C37 - C38.3 C38.8)	56
(ICD-O-3 C42).....	58
(ICD-O-3 M-98003 - M-99643 M-99803 - M-99893).....	60
(ICD-O-3 C42.1 M-98353 - M-98373).....	62
(ICD-O-3 C42.1 M-98233).....	64
(ICD-O-3 C42.1 M-98403 M-98613 M-98663 M-98673	
M-98713 - M-98743 M-98953 - M-98973 M-99203	66
(ICD-O-3 C42.1 M-98633 M-98753 M-98763 M-99453	
M-99463 M-99633).....	68
(ICD-O-3 C40 - C41)	70
(ICD-O-3 C47 C49)	72
(ICD-O-3 C44)	74
(ICD-O-3 C44 M-87203 - M-87903).....	76
(ICD-O-3 C44 M-87203 - M-87903)	78
(ICD-O-3 C50)	80
(ICD-O-3 C51 - C58)	

(ICD-O-3 C53).....	82
(ICD-O-3 C54).....	84
(ICD-O-3 C56 C57.0 - C57.4).....	86
(ICD-O-3 C51 - C52	
C57.7 - C57.9)	88
(ICD-O-3 C60 - C63)	
(ICD-O-3 C61).....	90
(ICD-O-3 C62)	92
(ICD-O-3 C60 C63).....	94
(ICD-O-3 C64 - C68)	
(ICD-O-3 C67)	96
(ICD-O-3 C64).....	98
(ICD-O-3 C65 - C66 C68).....	100
(ICD-O-3 C69)	102
(ICD-O-3 C70 - C72)	
(ICD-O-3 C71).....	104
(ICD-O-3 C70 C72).....	106
(ICD-O-3 C73).....	108
(ICD-O-3 C74 - C75).....	110
(ICD-O-3 C77).....	112
(ICD-O-3 C77 M-95903 - M-97293 M-97503 - M-97583	
M-97643).....	114
(ICD-O-3 C00 -C80 (C77) M-95903 - M-97293	
M-97503 - M-97583 M-97643).....	116
(ICD-O-3 M-95903 - M-97293 M-97503 - M-97583 M-97643)	
.....	118
(ICD-O-3 M-96503 - M-96673)	120
(ICD-O-3 M-95903 - M-95963 M-96703 - M-97293	
M-97503 - M-97583 M-97643)	122
(ICD-O-3 C80).....	124

94	127
	94	128
	(ICD-O-3 C50)	130
	(ICD-O-3 C53)	132
94	135
	136
	148
	10	150
	10	154
	156
	220
	226
	228
	234
	10	236
	240
	372
	378
	382
	68 94	452
	68 94	464
ICD-O-3	466
	470
	94	471
1976 2000	472





()

	71		10			3		
					92	5		
						68	50	
						2	1	
			2					
						96	5	223
50			94					
					68	1	1	
					International Classification of Diseases for Oncology ICD-O			
	5		2		3			
		68		90				
ICD-O, Field Trial Edition		ICD-O-FT			91	1	1	
					ICD-O, Third Edition ICD-O-3			

on Cancer, IARC

International Agency for Research

()

1

2

3

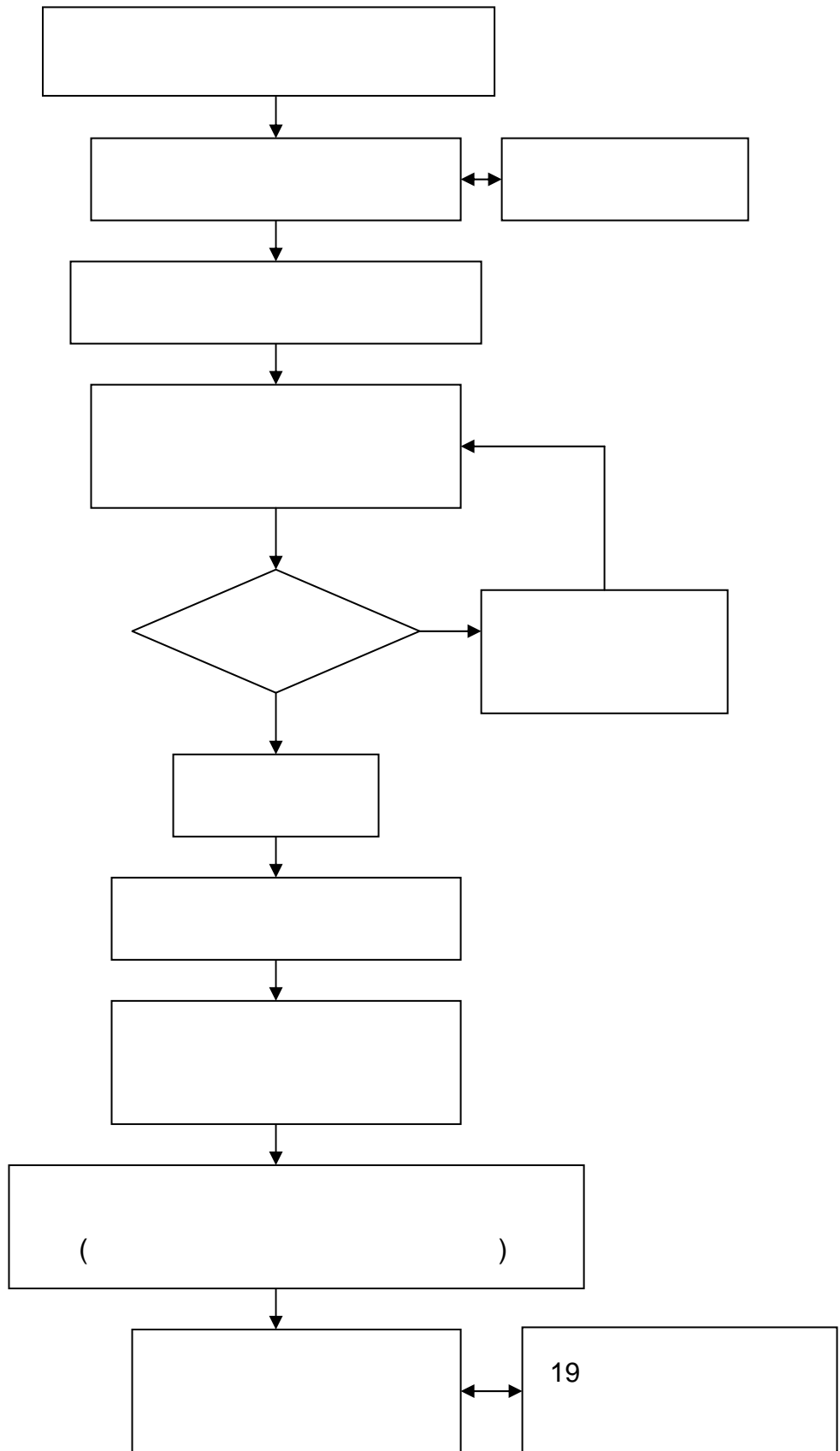
4

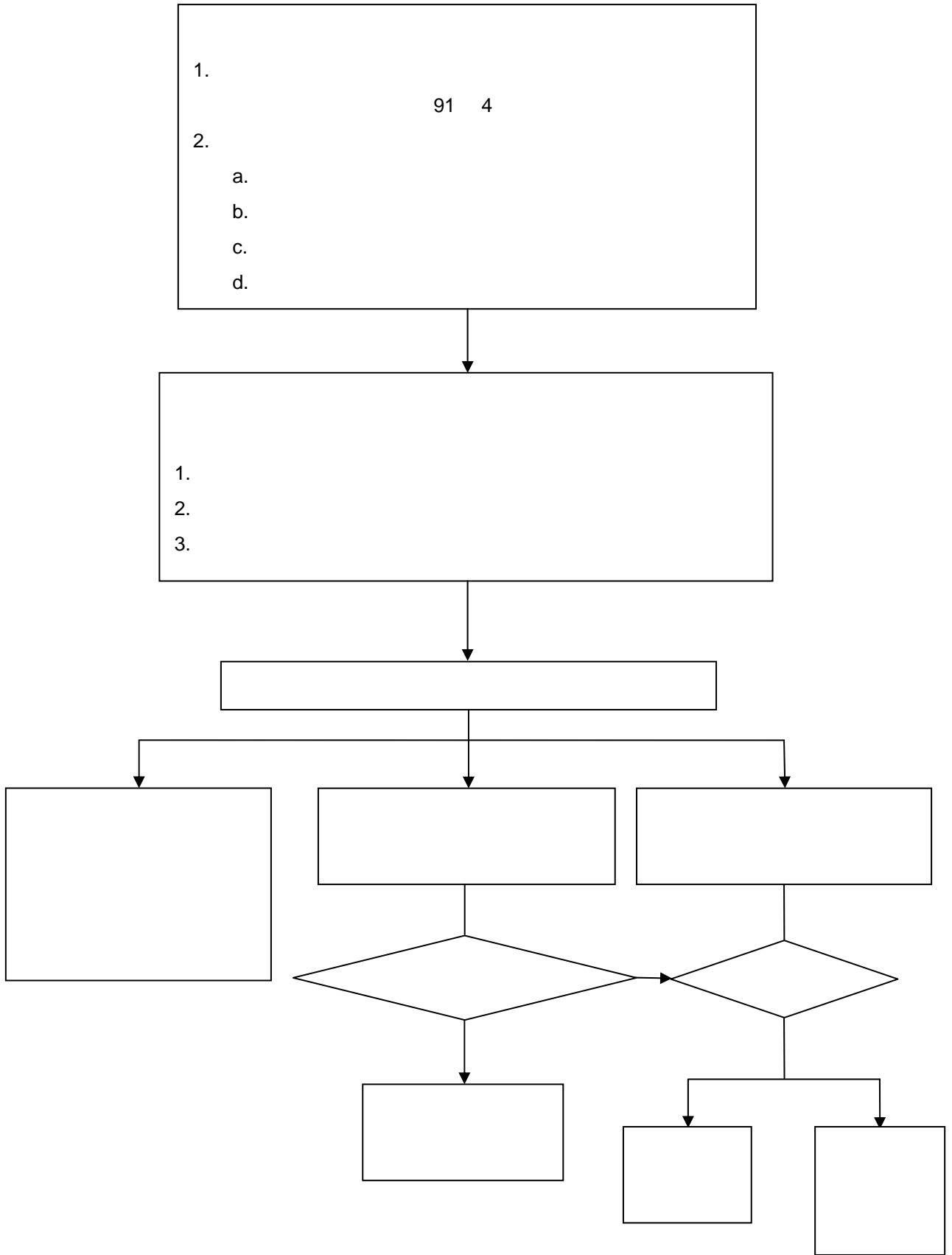
5

()

12

()





()

96 5 94
 89,466 6,183
 39,430 29,477 68,907
 ICD-O-3 94
 530

ICD-O-FT	ICD-O-3	Label			
140	C00	Lip	208	184	-24
143	C03	Gum	390	308	-82
144	C04	Floor of mouth	122	113	-9
145	C05 / C06	Palate / Other and unspecified parts of mouth	1,849	1,707	-142
			2,569	2,312	-257
146	C09 / C10	Tonsil / Oropharynx	480	473	-7
148	C12 / C13	Pyramidal sinus / Hypopharynx	577	561	-16
149	C14	Other and ill-defined sites in lip, oral cavity and pharynx	58	45	-13
			1,115	1,079	-36
188	C67	Bladder	2,233	2,095	-138
189.1-189.9	C65 / C66 / C68	Renal pelvis / Ureter / Other and unspecified urinary organs	1,200	1,101	-99
			3,344	3,196	-237
			69,437	68,907	-530

94
 10 302.62
 341.02 263.00
 1976 2000 2000
 10 260.74
 298.59 223.32

IARC

Percentage of Death Certificate Only Cases, DCO%

Percentage of

Morphologically Verified Cases, MV%

IARC DCO% MV%

() DCO%

92-94

DCO% 92 2.61% 93 2.35% 94 1.77%

DCO%

92-94

	92 *			93 *			94		
	DCO			DCO			DCO		
	5,770	46	0.79	6,806	46	0.67	7,242	35	0.48
	9,295	400	4.13	10,134	446	4.22	9,930	350	3.40
	8,443	159	1.85	9,905	165	1.64	9,946	128	1.27
	7,372	381	4.91	8,329	374	4.30	8,324	297	3.45
	2,265	48	2.08	2,783	54	1.90	2,718	31	1.13
	4,379	57	1.28	4,891	36	0.73	4,766	34	0.71
	4,946	50	1.00	6,498	36	0.55	5,777	33	0.57
	3,514	82	2.28	3,848	106	2.68	3,602	54	1.48
	1,897	14	0.73	2,404	12	0.50	2,301	8	0.35
	797	3	0.38	913	3	0.33	988	3	0.30
	66,336	1,776	2.61	75,272	1,813	2.35	74,297	1,337	1.77
	92	93	96	5					

()

MV%

MV%

MV%

94

MV%

85.18%

90.31%

88

91

93

94

DCO%

87

8.82%

94

1.77%

93

23

94

17

91

92

92

SARS



- | | |
|-----|------|
| 1. | 51. |
| 2. | 52. |
| 3. | 53. |
| 4. | 54. |
| 5. | 55. |
| 6. | 56. |
| 7. | 57. |
| 8. | 58. |
| 9. | 59. |
| 10. | 60. |
| 11. | 61. |
| 12. | 62. |
| 13. | 63. |
| 14. | 64. |
| 15. | 65. |
| 16. | 66. |
| 17. | 67. |
| 18. | 68. |
| 19. | 69. |
| 20. | 70. |
| 21. | 71. |
| 22. | 72. |
| 23. | 73. |
| 24. | 74. |
| 25. | 75. |
| 26. | 76. |
| 27. | 77. |
| 28. | 78. |
| 29. | 79. |
| 30. | 80. |
| 31. | 81. |
| 32. | 82. |
| 33. | 83. |
| 34. | 84. |
| 35. | 85. |
| 36. | 86. |
| 37. | 87. |
| 38. | 88. |
| 39. | 89. |
| 40. | 90. |
| 41. | 91. |
| 42. | 92. |
| 43. | 93. |
| 44. | 94. |
| 45. | 95. |
| 46. | 96. |
| 47. | 97. |
| 48. | 98. |
| 49. | 99. |
| 50. | 100. |



101.	151.
102.	152.
103.	153.
104.	154.
105.	155.
106.	156.
107.	157.
108.	158.
109.	159.
110.	160.
111.	161.
112.	162.
113.	163.
114.	164.
115.	165.
116.	166.
117.	167.
118.	168.
119.	169.
120.	170.
121.	171.
122.	172.
123.	173.
124.	174.
125.	175.
126.	176.
127.	177.
128.	178.
129.	179.
130.	180.
131.	181.
132.	182.
133.	183.
134.	184.
135.	185.
136.	186.
137.	187.
138.	188.
139.	189.
140.	190.
141.	191.
142.	192.
143.	193.
144.	194.
145.	195.
146.	196.
147.	197.
148.	198.
149.	199.
150.	



200.
201.
202.
203.
204.
205.
206.
207.
208.
209.
210.
211.
212.

213.
214.
215.
216.
217.
218.
219.
220.
221.
222.
223.

94

71 10
 26.79% 10
² 139.02
 302.62 10

94 37,222
 163.47 10
 68,907 10
² 260.74

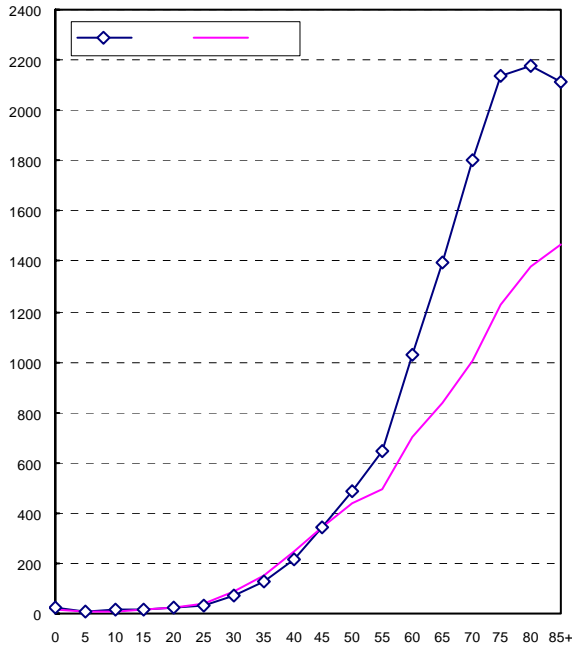
10

()	39,430	29,477
	65	59
(10)	341.02	263.00
¹ (10)	267.67	201.61
² (10)	298.59	223.32
()	1.34	1

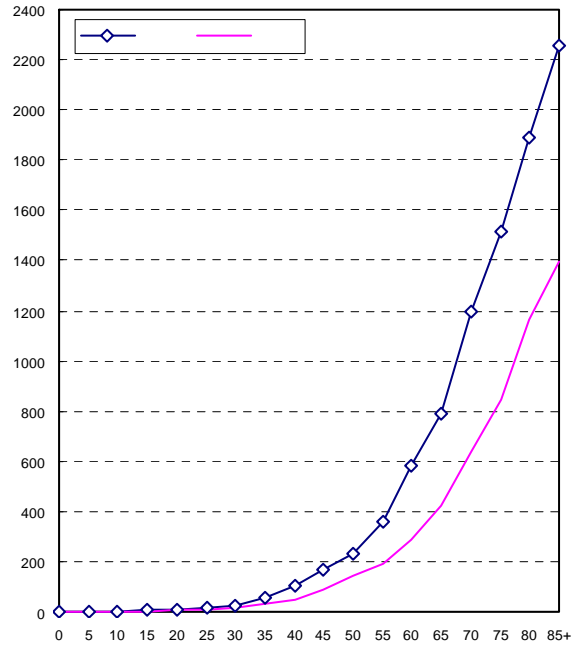
1.2. ¹ 1976

()	23,944	13,278
	69	69
(10)	207.08	118.47
¹ (10)	156.44	86.11
² (10)	179.01	99.28
()	1.80	1

² 2000



94



94

10	6	10	94	1	2
ICD-O-3					
1	C50	6,594	58.83 (1)	45.54	49.19
2	C22	9,916	43.55	34.54	37.99
3	C18-C21	9,604	42.18	32.11	36.28
4	C33-C34	8,312	36.50	26.96	31.05
5	C61	2,704	23.39 (2)	16.47	19.72
6	C00-C14 ³	4,743	20.83	16.47	17.78
7	C53	1,977	17.64 (1)	13.34	14.74
8	C16	3,580	15.72	11.37	13.21
9	C44 ⁴	2,177	9.56	7.12	8.16
10	C54	987	8.81 (1)	6.86	7.37
M959 ⁵		1,690	7.42	5.91	6.53
C00-C80		68,907	302.62	234.21	260.74

10	6	10	94	1	2
ICD-O-3					
1	C50	7,240	64.60 (1)	49.97	53.97
	C50	646	5.76 (1)	4.43	4.78
	C50	6,594	58.83 (1)	45.54	49.19
2	C53	5,775	51.53 (1)	39.40	43.57
	C53	3,798	33.89 (1)	26.07	28.83
	C53	1,977	17.64 (1)	13.34	14.74
3	C22	9,929	43.60	34.59	38.04
4	C18-C21	9,946	43.68	33.31	37.60
5	C33-C34	8,322	36.55	27.00	31.09
6	C61	2,718	23.51 (2)	16.55	19.82
7	C00-C14 ³	4,766	20.93	16.55	17.87
8	C16	3,602	15.82	11.45	13.29
9	C44 ⁴	2,303	10.11	7.54	8.64
10	C67	2,095	9.20	6.77	7.82
M959 ⁵		1,690	7.42	5.91	6.53
C00-C80		74,289	326.25	252.65	281.10

10	10	94	1	2
ICD-9				
1	162	7,302	32.07	22.83
2	155	7,108	31.22	23.98
3	153-154	4,111	18.05	12.90
4	174	1,439	12.84 (1)	9.77
5	151	2,490	10.94	7.55
6	140 ³	2,041	8.96	7.05
7	185	909	7.86 (2)	5.11
8	180	874	7.80 (1)	5.63
9	150	1,261	5.54	4.31
10	157	1,174	5.16	3.79
200 ⁷		1,156	5.08	3.79
140-208		37,222	163.47	120.98

1. 1976
 2. 2000
 3. C00-C06 C09-C10 C12-14
 4.
 5. M-95903 - M-97293 (M-96503 - M-96673) M-97503 - M-97583 M-97643
 6. 5 2
 7. 200 202-203
 8. (1) 10 (2) 10

10		6	10	94		
ICD-O-3				1	2	
1	C22		7,159	61.92	50.52	55.10
2	C18-C21		5,497	47.54	37.07	41.77
3	C33-C34		5,566	48.14	35.94	41.42
4	C00-C14 ³		4,310	37.28	30.08	32.36
5	C61		2,704	23.39	16.47	19.72
6	C16		2,288	19.79	14.45	16.82
7	C15		1,403	12.13	9.87	10.66
8	C67		1,363	11.79	8.74	10.13
9	C44 ⁴		1,138	9.84	7.57	8.57
10	C11		1,123	9.71	7.75	8.42
M959 ⁵			1,005	8.69	7.04	7.76
C00-C80			39,430	341.02	267.67	298.59

10		6	10	94		
ICD-O-3				1	2	
1	C22		7,166	61.98	50.57	55.15
2	C18-C21		5,696	49.26	38.47	43.31
3	C33-C34		5,572	48.19	35.98	41.47
4	C00-C14 ³		4,331	37.46	30.23	32.53
5	C61		2,718	23.51	16.55	19.82
6	C16		2,303	19.92	14.55	16.94
7	C67		1,502	12.99	9.63	11.16
8	C15		1,419	12.27	9.99	10.79
9	C44 ⁴		1,209	10.46	8.06	9.12
10	C11		1,125	9.73	7.77	8.44
M959 ⁵			1,005	8.69	7.04	7.76
C00-C80			39,975	345.73	271.36	302.73

10		10	94			
ICD-9			1	2		
1	155		5,221	45.15	36.00	39.90
2	162		5,083	43.96	31.65	37.35
3	153-154		2,425	20.97	15.26	17.95
4	140 ³		1,874	16.21	13.10	14.16
5	151		1,671	14.45	10.10	12.13
6	150		1,188	10.27	8.28	9.03
7	185		909	7.86	5.11	6.50
8	157		657	5.68	4.30	4.92
9	147		643	5.56	4.50	4.90
10	204-208		554	4.79	3.95	4.32
200 ⁷			705	6.10	4.59	5.27
140-208			23,944	207.08	156.44	179.01

1. ¹ 1976
 2. ² 2000
 3. C00-C06 C09-C10 C12-14
 4.
 5. M-95903 - M-97293 (M-96503 - M-96673) M-97503 - M-97583 M-97643
 6. ⁵ ²
 7. 200 202-203

10	6	10	94		
ICD-O-3				1	2
1	C50	6,594	58.83	45.54	49.19
2	C18-C21	4,107	36.64	27.30	30.87
3	C22	2,757	24.60	18.90	21.16
4	C33-C34	2,746	24.50	18.09	20.64
5	C53	1,977	17.64	13.34	14.74
6	C16	1,292	11.53	8.34	9.59
7	C73	1,146	10.22	8.17	8.88
8	C44 ⁴	1,039	9.27	6.69	7.75
9	C54	987	8.81	6.86	7.37
10	C56,C57.0-C57.4	894	7.98	6.29	6.81
M959 ⁵		685	6.11	4.79	5.30
C00-C80		29,477	263.00	201.61	223.32

10	6	10	94		
ICD-O-3				1	2
1	C50	7,240	64.60	49.97	53.97
	C50	646	5.76	4.43	4.78
	C50	6,594	58.83	45.54	49.19
2	C53	5,775	51.53	39.40	43.57
	C53	3,798	33.89	26.07	28.83
	C53	1,977	17.64	13.34	14.74
3	C18-C21	4,250	37.92	28.30	31.97
4	C22	2,763	24.65	18.95	21.21
5	C33-C34	2,750	24.54	18.12	20.67
6	C16	1,299	11.59	8.39	9.65
7	C73	1,146	10.22	8.17	8.88
8	C44 ⁴	1,094	9.76	7.04	8.17
9	C54	988	8.82	6.86	7.37
10	C56,C57.0-C57.4	894	7.98	6.29	6.81
M959 ⁵		685	6.11	4.79	5.30
C00-C80		34,314	306.16	234.79	259.93

10	10	94		
ICD-9			1	2
1	162	2,219	19.80	14.11
2	155	1,887	16.84	12.21
3	153-154	1,686	15.04	10.57
4	174	1,439	12.84	9.77
5	180	874	7.80	5.63
6	151	819	7.31	5.04
7	157	517	4.61	3.29
8	156	458	4.09	3.02
9	183	357	3.19	2.42
10	204-208	328	2.93	2.40
	200 ⁷	451	4.02	3.00
140-208		13,278	118.47	86.11

1. 1976
2. 2000

4.
5. M-95903 - M-97293 (M-96503 - M-96673) M-97503 - M-97583 M-97643

6. 5
7. 200 202-203

()
 ICD-O-FT T-140 - T-149 (T-142 T-147)
 ICD-O-3 C00 - C14 (C07 - C08 C11)
 ICD-9 140-149 (142 147)

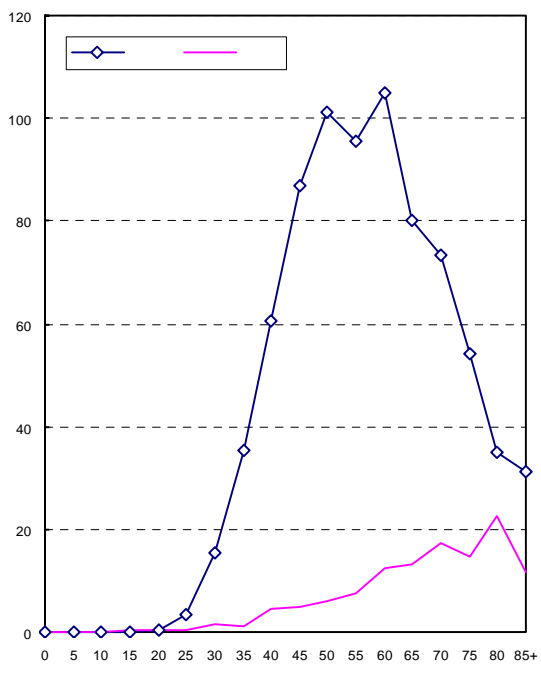
94
 6.88%
 5.48% 4 15
 4 15 94 15
 4,743 2,041

()	4,310	433
	51	60
(10)	37.28	3.86
¹ (10)	30.08	2.98
² (10)	32.36	3.29
()	9.84	1

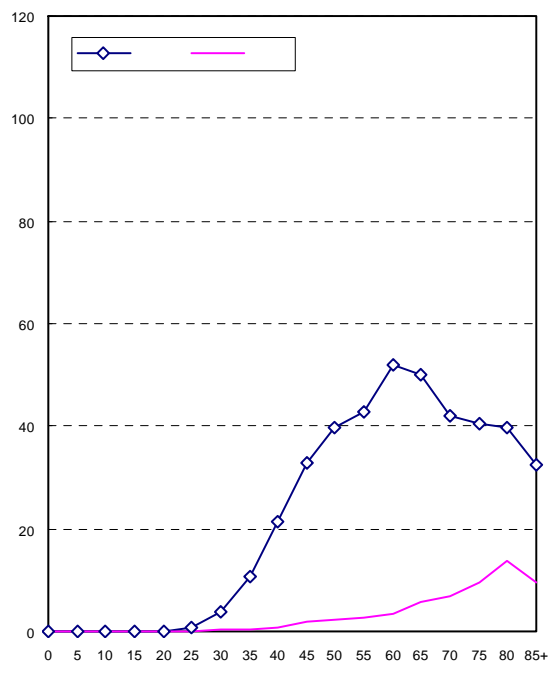
()	1,874	167
	54	66
(10)	16.21	1.49
¹ (10)	13.10	1.09
² (10)	14.16	1.24
()	11.42	1

1.2. ¹ 1976

² 2000



94



94

4,743						
4,666		98.38%		98.38%		98.38%
90.88%		75.52%				
<hr/>						
	3,917	90.88	3,908	327	75.52	326
	165	3.83	165	18	4.16	18
	8	0.19	8	1	0.23	1
	38	0.88	38	32	7.39	32
	12	0.28	12	4	0.92	4
	32	0.74	28	4	0.92	4
	65	1.51	64	37	8.55	37
	3	0.07	3	2	0.46	2
	5	0.12	5	1	0.23	1
	1	0.02	1	1	0.23	1
	64	1.48	8	6	1.39	-
	4,310	100.00	4,240	433	100.00	426

4,743					
4,310		66.82%	433	68.59%	
<hr/>					
	*				
		2,880	66.82	297	68.59
		2,015	46.75	145	33.49
		1,661	38.54	126	29.10
		2	0.05	-	-
		1	0.02	1	0.23
		378	8.77	55	12.70
		312	7.24	30	6.93

*